

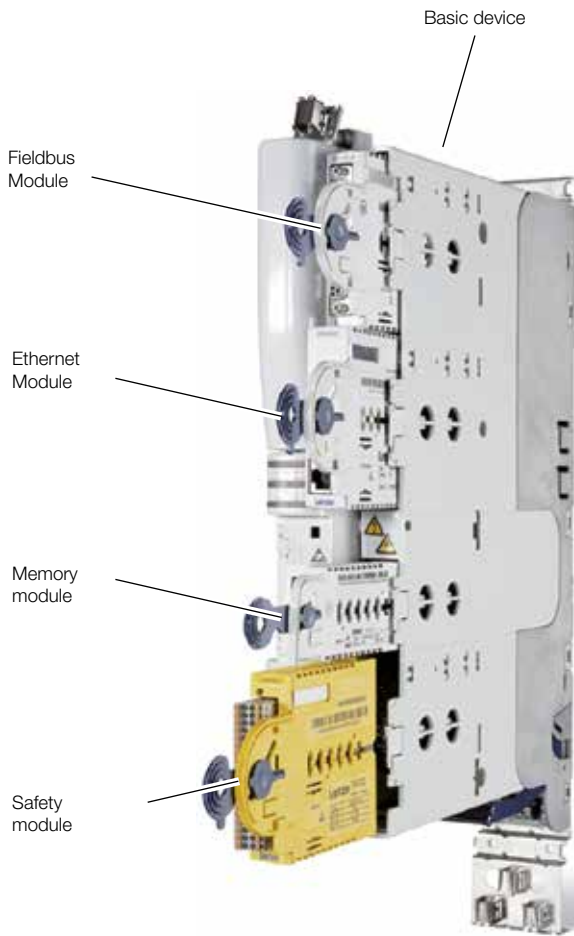
TOX®-Servocontroller

Data sheet 40.70
2022/02



TOX[®]-Servocontroller

General data and operating conditions



The central intelligence: The freely parameterizable servo controller is a single-axis servo controller with integrated logic.

It controls and regulates the TOX[®]-ElectricDrive system with all required functions. Benefits are the immediate processing of process data and a direct response to their deviations. The process data can be viewed during and after production for a complete quality certificate, and documented accordingly.

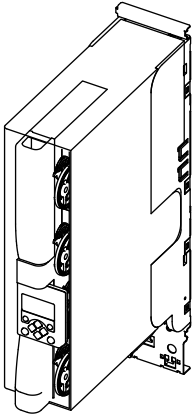
The modules can be easily replaced by means of the plug-in system

| | | |
|-----------------------------|----------------------------|----------------------------------------------------------------------------------|
| Operating conditions | | |
| Circuit type | With grounded star-circuit | Unlimited use |
| | IT-net | Follow instructions for special measures! |
| Standards | | |
| Conformity | CE | Low voltage directive (2006/95/EC) |
| Approvals | UL 508C | Power Conversion Equipment (File-No. 32659) |
| Enclosure | | |
| Enclosure type | EN 60529 | IP20 |
| | NEMA 250 | Contact protection according to type 1 |
| | | Not in the connecting area of the motor side connectors. |
| Climatic conditions | | |
| Operation* | IEC/EN 60721-3-3 EN 50178 | 3K3 (-10 ... +55° C) Derating of rated output current +45 ... +55° C: 2.5 % / °C |
| Relative air moisture | | max. 85 %, without condensation |

*Attention: In case of an installation at 1000 m above sea level the reduction of the nominal current will be 5 % / 1000 m.

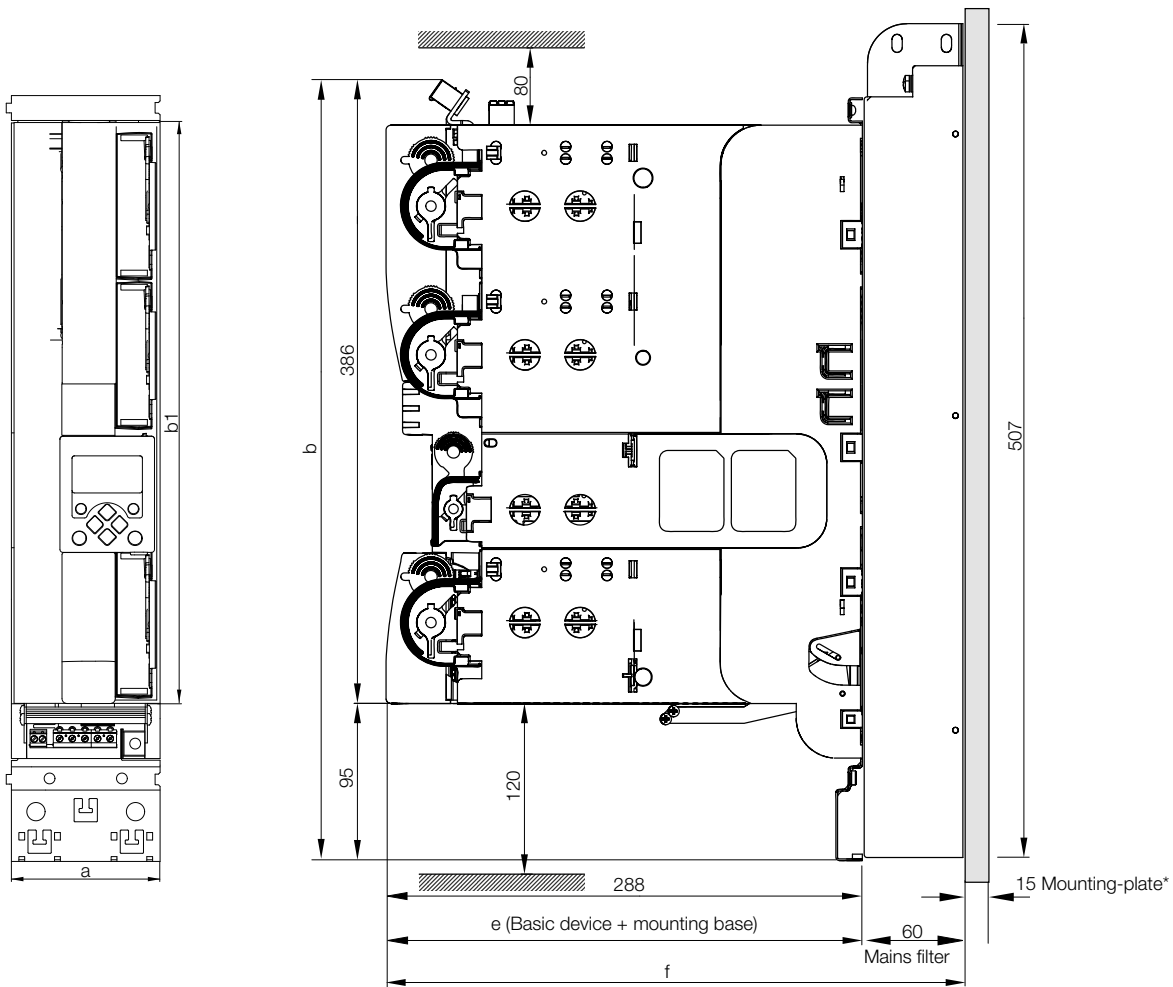
TOX®-Servocontroller size 2

For TOX®-ElectricDrive-systems up to 10 kN press force



Dimensions

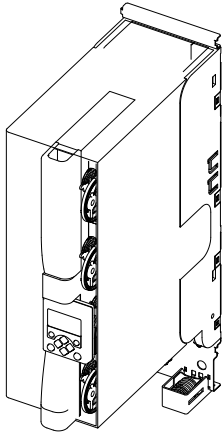
| Basic device incl. mounting base mm | | | | | Weight kg |
|-------------------------------------|-----|-----|-----|-----|-----------|
| a | b | b1 | e | f | |
| 90 | 481 | 350 | 288 | 348 | 5.3 |



- * Mounting plate existing (comes with the switch cabinet)
- Built-in depth of switch cabinet: 400 mm
- Dimensions of ballast resistor W/H/D: T/H/B 30/60/355 mm

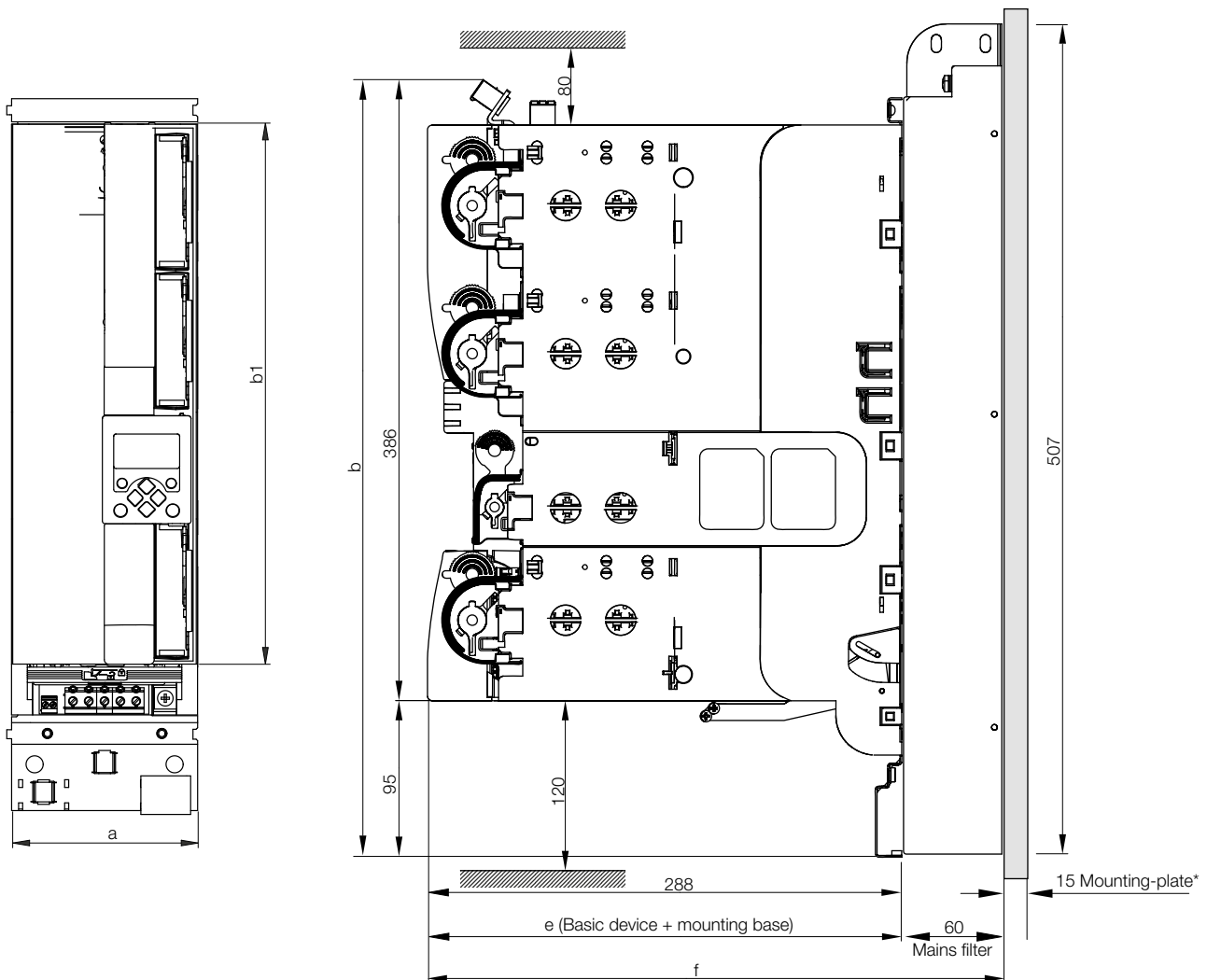
TOX[®]-Servocontroller size 3

For TOX[®]-ElectricDrive-systems 25 - 100 kN press force



Dimensions

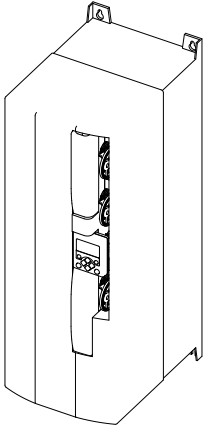
| Type | Basic device incl. mounting base mm | | | | | Weight kg |
|------|-------------------------------------|-----|-----|-----|-----|-----------|
| | a | b | b1 | e | f | |
| EX-K | 120 | 481 | 350 | 288 | 348 | 8.1 |



- * Mounting plate existing (comes with the switch cabinet)
- Built-in depth of switch cabinet: 400 mm
- Dimensions of ballast resistor W/H/D: T/H/B 30/60/355 mm

TOX®-Servocontroller size 6

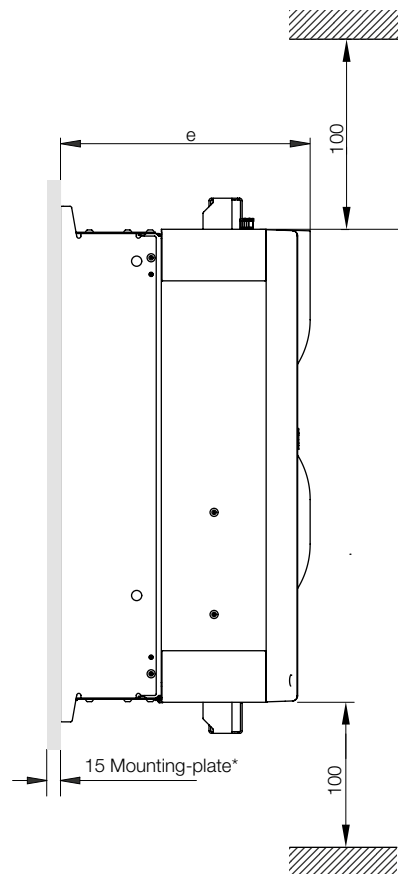
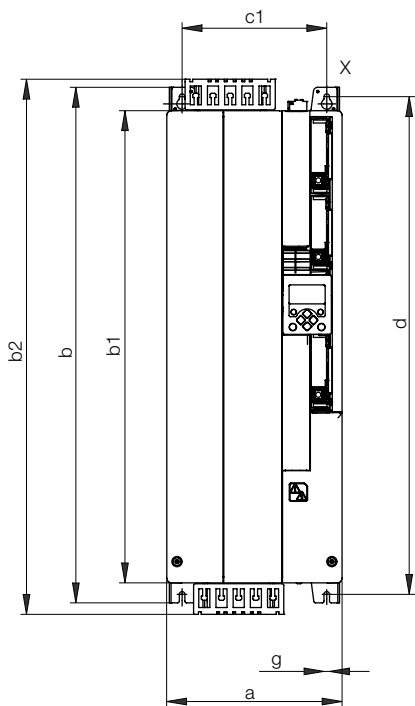
For TOX®-ElectricDrive-systems 200 - 700 kN press force



Dimensions

Basic device + mounting base (here mains filter integrated) mm

| a | b | b1 | b2 | e | c1 | d | g | Weight kg |
|-----|-----|-----|-----|-----|-----|-----|-----|-----------|
| 206 | 606 | 556 | 630 | 294 | 170 | 585 | 6.5 | 26.5 |



- * Mounting plate existing (comes with the switch cabinet)
- Built-in depth of switch cabinet: 400 mm
- Dimensions of ballast resistor W/H/D: T/H/B 30/60/355 mm

TOX[®]-Servocontroller

Wiring diagram

Block diagram

Use of the TOX[®]-ElectricDrive system.
Simplified diagram.

